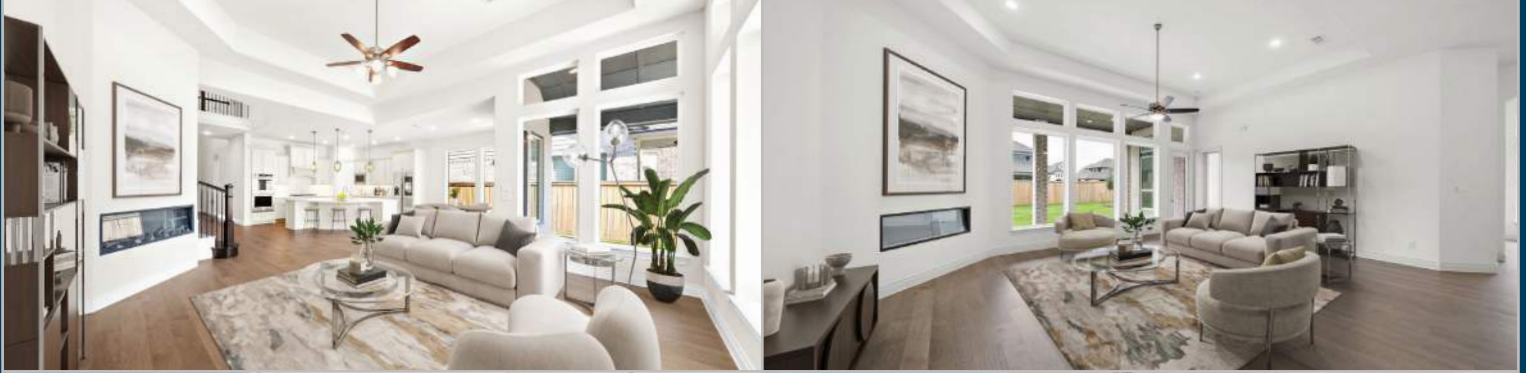


# Inventory Homes in Bridgeland 60'



## 21215 Painted Lady Drive

4 BED | 3½ BATH | 2 STORY | 2½ CAR | 3,098 SQ.FT.

WAS **\$781,900** | NOW **\$689,900**

## 11127 Legume Court

3 BED | 3½ BATH | 1 STORY | 2½ CAR | 2,855 SQ.FT.

WAS **\$743,900** | NOW **\$639,900**

ADDRESS	PLAN	STORY	BED	BATH	CAR	SQ.FT.	STATUS	WAS	NOW
<b>11127 Legume Court</b>	<b>2855-C3</b>	<b>1</b>	<b>3</b>	<b>3½</b>	<b>2½</b>	<b>2,855</b>	<b>Ready!</b>	<b>\$743,900</b>	<b>\$639,900</b>
2-story home features large entry with 21' ceilings that lead you to the statement staircase. The open concept layout connects the kitchen, large family room and casual dining area. The kitchen features 42" cabinets, high-bar seating, and an oversized island. The centrally located family room displays 13' ceilings, a corner fireplace, and full wall of windows that look out to the oversized 24' wide patio. The master bath includes a freestanding tub, separate shower, His and Hers vanities, and separate closets.									
<b>21215 Painted Lady Drive</b>	<b>3070-D3</b>	<b>2</b>	<b>4</b>	<b>3½</b>	<b>2½</b>	<b>3,098</b>	<b>Ready!</b>	<b>\$781,900</b>	<b>\$689,900</b>
2-story home features large entry with 21' ceilings that lead you to the statement staircase. The open concept layout connects the kitchen, large family room and casual dining area. The kitchen features 42" cabinets, high-bar seating, and an oversized island. The centrally located family room displays 13' ceilings, a corner fireplace, and full wall of windows that look out to the oversized 24' wide patio. The master bath includes a freestanding tub, separate shower, His and Hers vanities, and separate closets.									
<b>10711 Flamingo Feather Court</b>	<b>3546-D4</b>	<b>1½</b>	<b>4</b>	<b>3½+½</b>	<b>3</b>	<b>3,680</b>	<b>March</b>		<b>\$804,900</b>
1½-story home features an elegant oval entry with 13' ceilings that open to the formal living room. The extended entry with a 12' ceiling is flanked by formal dining room on one side and kitchen on the opposite side. The kitchen is central to the home and open to the dining room, breakfast room and family room. It features a large island, quartz countertops, KitchenAid appliances and 42" cabinets. The family room features a 14' ceiling, electric fireplace, and large wall of windows that look out to the 30' wide patio. Master bath includes a freestanding tub, separate shower and His and Hers vanities. Located upstairs is a game room, theater room, and ½ bath.									
<b>10714 Flamingo Feather Court</b>	<b>3326-D3</b>	<b>1½</b>	<b>4</b>	<b>4½</b>	<b>3½</b>	<b>3,326</b>	<b>June</b>		<b>\$773,900</b>
1½-story home features large entry with 12' ceilings that extend past open dining room with 12' ceilings and leads to the family room with 12' ceilings, corner electric fireplace, and full wall of windows. Open kitchen overlooks the large family room and breakfast room, and features 42" cabinets and an oversized island with high-bar seating. Master bath includes a freestanding tub, separate shower and His and Hers vanities. Upstairs includes a game room, theater room, bedroom, and bathroom. Oversized 33' wide patio overlooks the backyard.									
<b>21610 Hummingbird Bush Drive</b>	<b>3663-A1</b>	<b>1½</b>	<b>4</b>	<b>3½</b>	<b>3½</b>	<b>3,663</b>	<b>June</b>		<b>\$794,900</b>
1½-story home features an elegant oval entry with 13' ceilings that open to the formal living room. The extended entry with a 21' ceiling is flanked by formal dining room on one side and kitchen on the opposite side. The kitchen is central to the home and open to the dining room, breakfast room and family room. It features a large island with high bar, 42" cabinets, stainless steel built-in microwave and oven, 36" cooktop, and dishwasher. The large 18'x21' family room features a 14' ceiling, electric fireplace, and large wall of windows. The master bath includes a freestanding tub, separate shower and His and Hers vanities. Located upstairs is a game room, theater room, and ½ bath. Large 30' wide covered patio overlooks the backyard.									
<b>10719 Jacobina Court</b>	<b>3799-B1</b>	<b>2</b>	<b>5</b>	<b>4½</b>	<b>3</b>	<b>3,799</b>	<b>June</b>		<b>\$831,900</b>
2-story home features an entry with 21' ceilings that extend past study. Oversized 17'x23' family room with 21' ceilings, corner electric fireplace, and full wall of windows. Open kitchen features 42" cabinets and high-bar seating. Master bath includes a freestanding tub, separate shower, His & Hers vanities, and dual walk-in closets. Located upstairs are 3 bedrooms, 2 baths, theater room and a game room. An oversized 28' wide covered patio overlooks the backyard.									
<b>10710 Flamingo Feather Court</b>	<b>3799-B1</b>	<b>2</b>	<b>5</b>	<b>4½</b>	<b>3</b>	<b>3,799</b>	<b>June</b>		<b>\$832,900</b>
2-story home features an entry with 21' ceilings that extend past study. Oversized 17'x23' family room with 21' ceilings, corner electric fireplace, and full wall of windows. Open kitchen features 42" cabinets and high-bar seating. Master bath includes a freestanding tub, separate shower, His & Hers vanities, and dual walk-in closets. Located upstairs are 3 bedrooms, 2 baths, theater room and a game room. Oversized 28' x 18' patio looks out to the backyard.									
<b>21623 Hummingbird Bush Drive</b>	<b>3546-AC3</b>	<b>1½</b>	<b>5</b>	<b>4½</b>	<b>3</b>	<b>3,711</b>	<b>Sold</b>		<b><i>SOLD!</i></b>
1½-story home features an elegant oval entry with 13' ceilings that open to the formal living room. The extended entry with a 12' ceiling is flanked by formal dining room on one side and kitchen on the opposite side. The kitchen is central to the home and open to the dining room, breakfast room and family room. It features a large island, quartz countertops, KitchenAid appliances and 42" cabinets. The family room features a 14' ceiling, electric fireplace, and a large wall of windows overlooking a 30' wide patio and spacious backyard. Master bath includes a freestanding tub, separate shower and His and Hers vanities. Located upstairs is a game room, additional bedroom and full bath. This home looks out over the beautiful Lake Chrysalis and surrounding greenspace.									



**Joe Montgomery**  
832-647-3965  
jmontgomery@ravennahomes.com  
21210 Prince of Orange Lane  
Cypress, TX 77433

**Texas Size Living**

**BIGGER. BETTER.**

**Come See the Difference**

**Konae Mitchell**  
832-418-4002  
kmitchell@ravennahomes.com  
21210 Prince of Orange Lane  
Cypress, TX 77433

